

**ACCESSIBLE PARKING SUMMARY**

BUILDING CODE OF AUSTRALIA (BCA) REQUIREMENTS:

1 SPACE PER 50 CARPARKS IN A CLASS 6 RETAIL/ COMMERCIAL ZONE

EXISTING ACCESSIBLE ONSTREET PARKING SPACES : 4

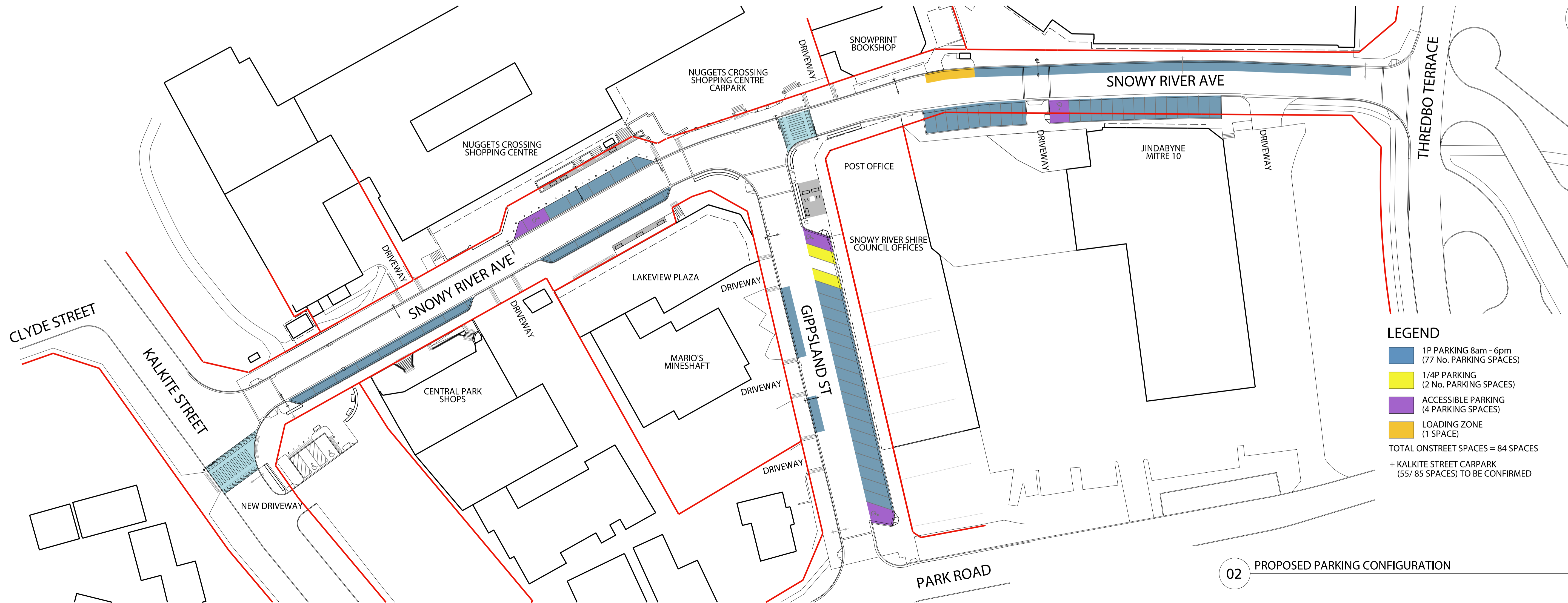
PROPOSED ACCESSIBLE ONSTREET PARKING SPACES : 4

THE PROPOSED SCHEME MEETS THE REQUIREMENTS OF THE BCA.



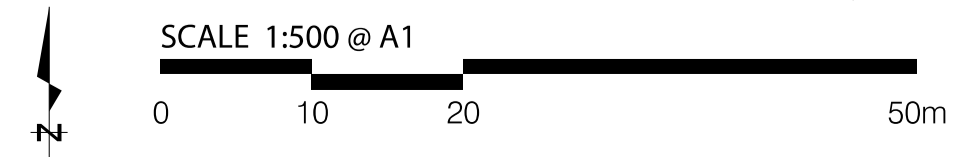
- LEGEND**
- 1P PARKING 8am - 6pm (82 PARKING SPACES)
  - 1/4P PARKING (2 PARKING SPACES)
  - ACCESSIBLE PARKING (4 PARKING SPACES)
  - LOADING ZONE (1 SPACE)
  - LOADING ZONE/ PARKING (2 No. SPACES)
  - OFFSTREET PARKING (8 SPACES)
- TOTAL ONSTREET SPACES = 99 SPACES  
+ KALKITE STREET CARPARK (65 SPACES)

01 EXISTING PARKING CONFIGURATION

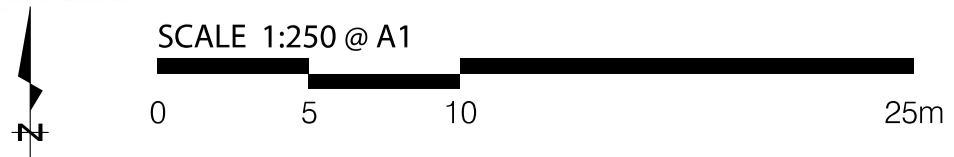
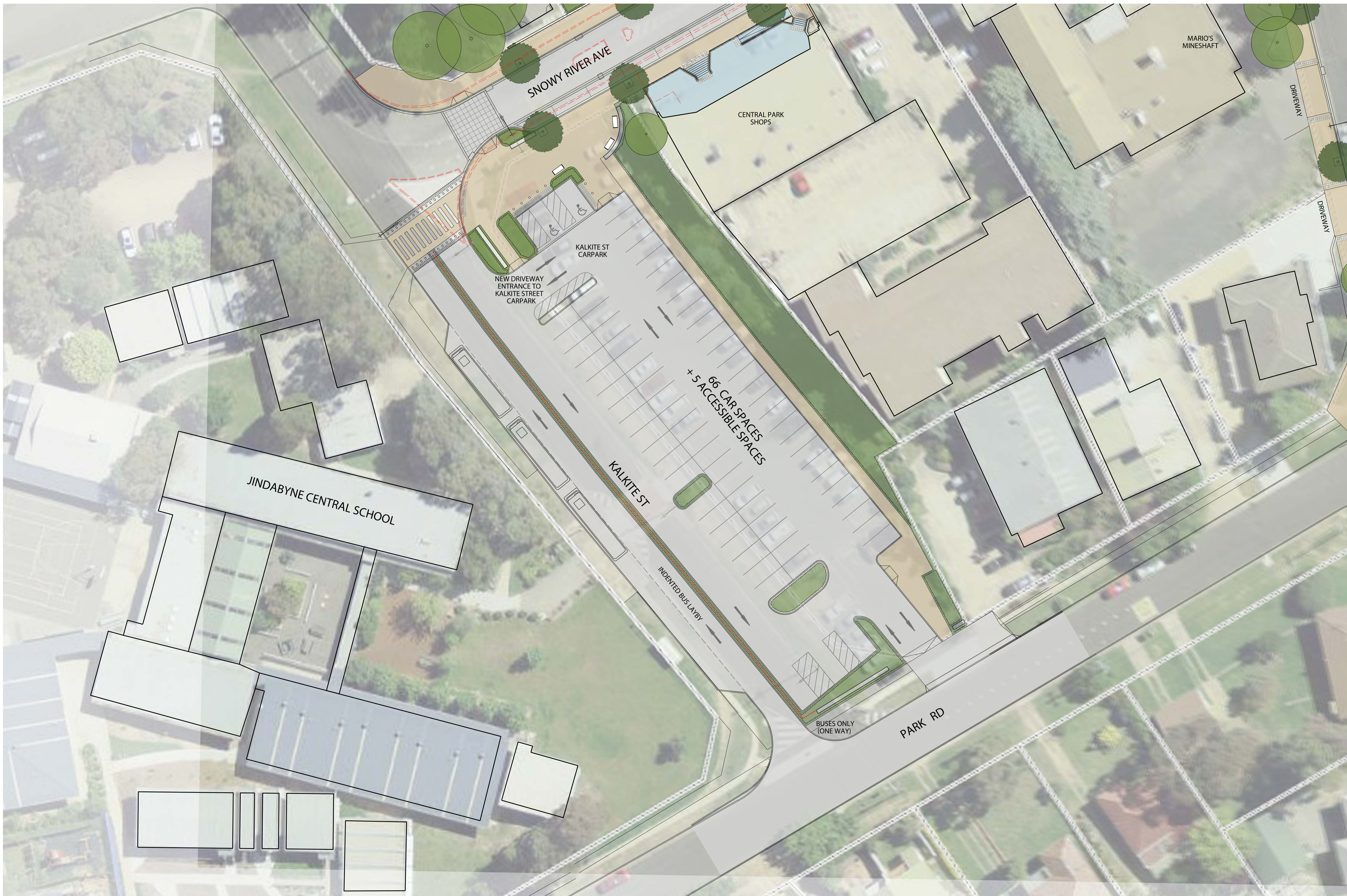


- LEGEND**
- 1P PARKING 8am - 6pm (77 No. PARKING SPACES)
  - 1/4P PARKING (2 No. PARKING SPACES)
  - ACCESSIBLE PARKING (4 PARKING SPACES)
  - LOADING ZONE (1 SPACE)
- TOTAL ONSTREET SPACES = 84 SPACES  
+ KALKITE STREET CARPARK (55/ 85 SPACES) TO BE CONFIRMED

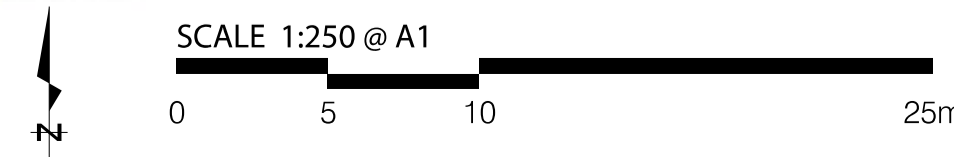
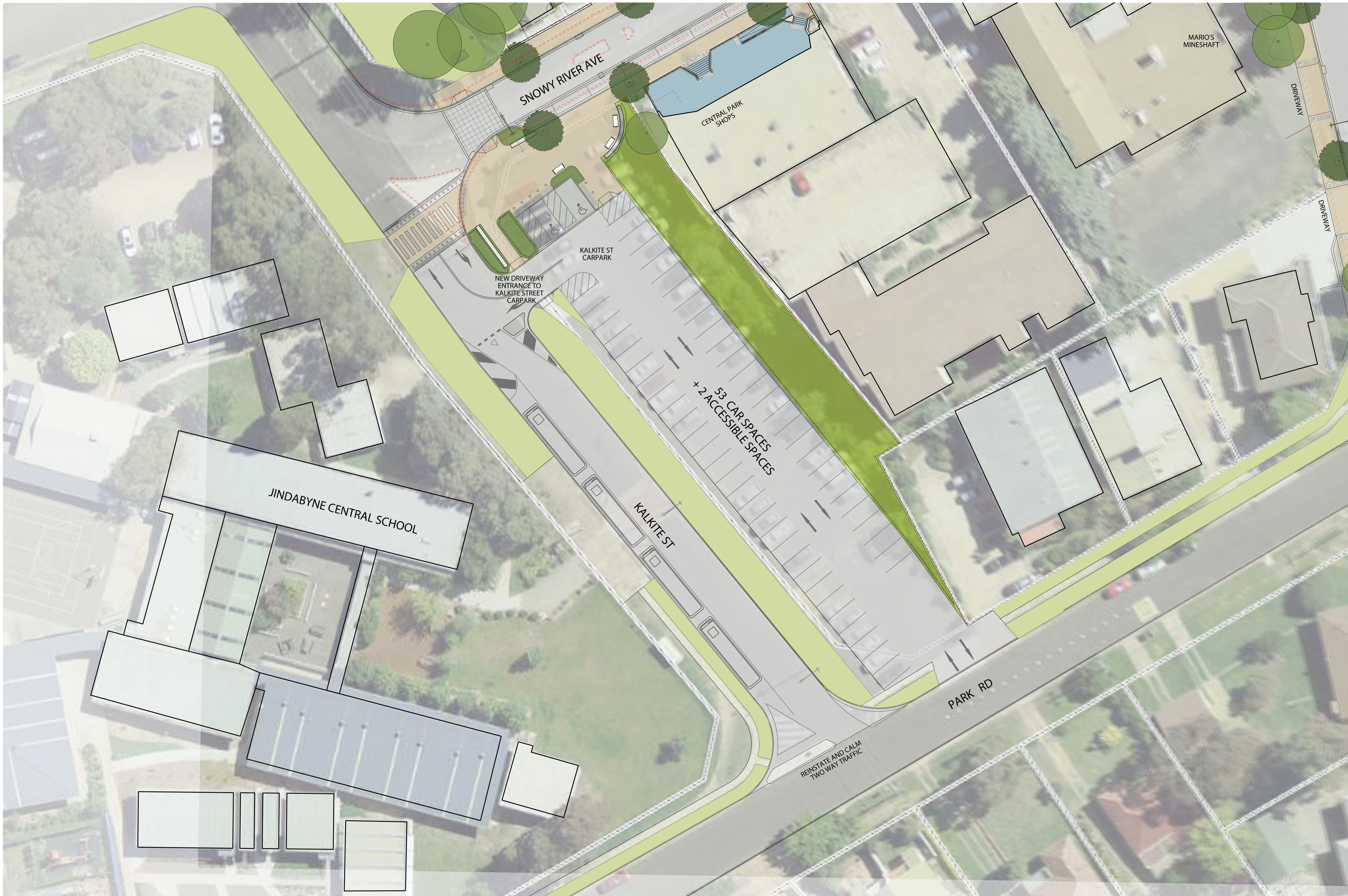
02 PROPOSED PARKING CONFIGURATION



**PARKING CONFIGURATION DIAGRAM**  
SNOWY RIVER AVENUE PRECINCT - CONCEPT DESIGN



**KALKITE STREET CARPARK - OPTION 1**  
 SNOWY RIVER AVENUE PRECINCT - CONCEPT DESIGN



**KALKITE STREET CARPARK - OPTION 2**  
 SNOWY RIVER AVENUE PRECINCT - CONCEPT DESIGN